



S & D Real Estate

27 East Jericho Turnpike– Suite 2, Mineola, New York 11501

516-248-6905 516-741-4587 (Fax)

888 Veterans Memorial Highway– Suite 530, Hauppauge 11788

631-761-9220 631-761-9221 (Fax)

BUILDING FOR SALE



LOCATION
107 WALT WHITMAN
RD
HUNTINGTON
STATION
NY, 11746

IDENTIFIED AS
DISTRICT 400
SECTION 195
BLOCK 4.00
LOT 50

PROPERTY TYPE
RETAIL

Building Size	1,500	Price per Sq Ft	\$800.00
Taxes	14,712	Occupancy	Vacant
Tenancy	Single	Lot Size	0.21 Acres
Property Type	Retail		

\$1,200,000

Highly visible location on Route 110 with parking. Great parking with access from Route 110 and side street. Room for outdoor seating. Excellent for food or retail use.

Contact:

Ed Madden 516-521-5731 (cell)



S & D Real Estate

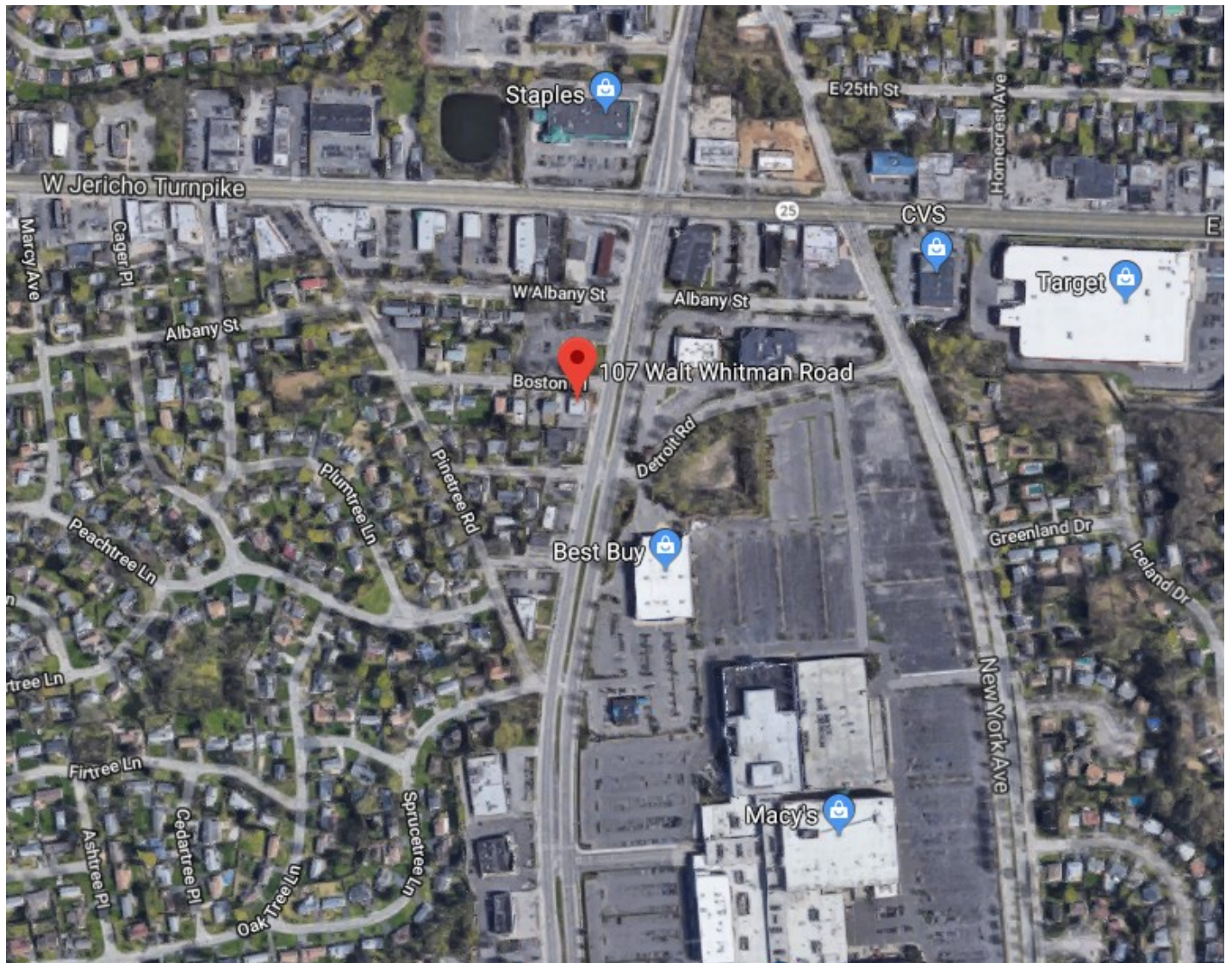
27 East Jericho Turnpike– Suite 2, Mineola, New York 11501

516-248-6905 516-741-4587 (Fax)

888 Veterans Memorial Highway– Suite 530, Hauppauge 11788

631-761-9220 631-761-9221 (Fax)

AERIAL VIEW



Contact:

Ed Madden 516-521-5731 (cell)



S & D Real Estate

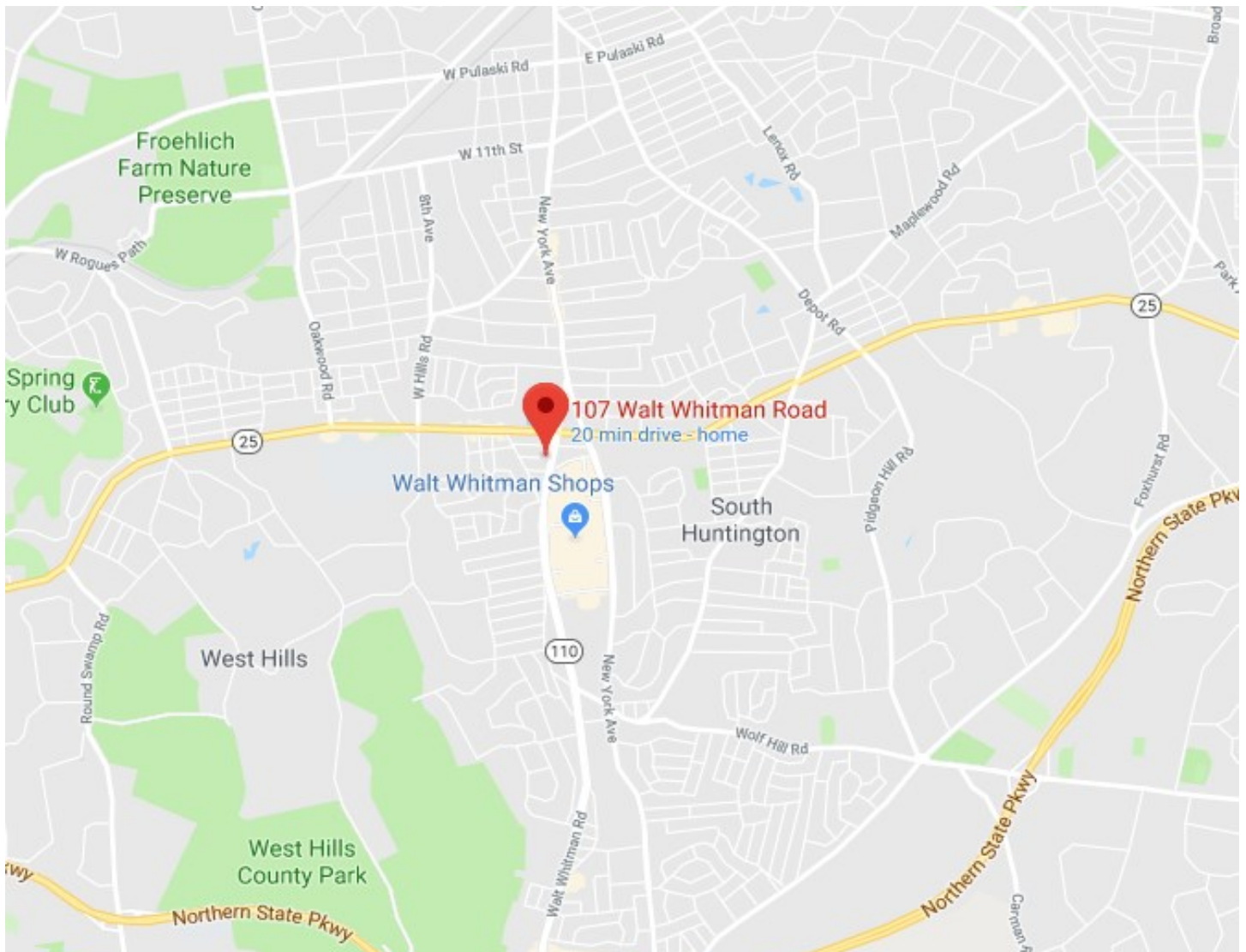
27 East Jericho Turnpike– Suite 2, Mineola, New York 11501

516-248-6905 516-741-4587 (Fax)

888 Veterans Memorial Highway– Suite 530, Hauppauge 11788

631-761-9220 631-761-9221 (Fax)

MAP



Contact:

Ed Madden 516-521-5731 (cell)



S & D Real Estate

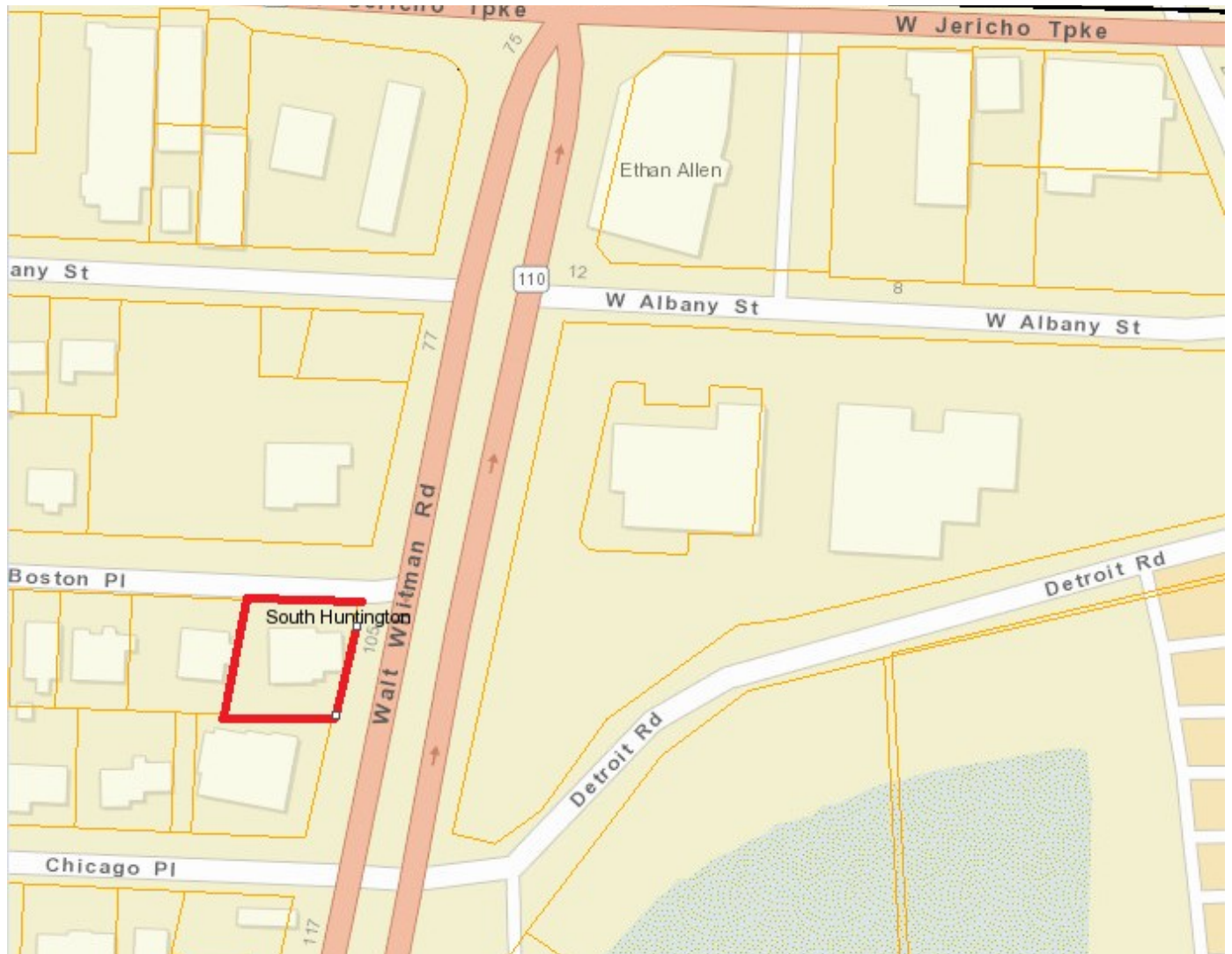
27 East Jericho Turnpike– Suite 2, Mineola, New York 11501

516-248-6905 516-741-4587 (Fax)

888 Veterans Memorial Highway– Suite 530, Hauppauge 11788

631-761-9220 631-761-9221 (Fax)

TAX MAP



Contact:

Ed Madden 516-521-5731 (cell)



S & D Real Estate

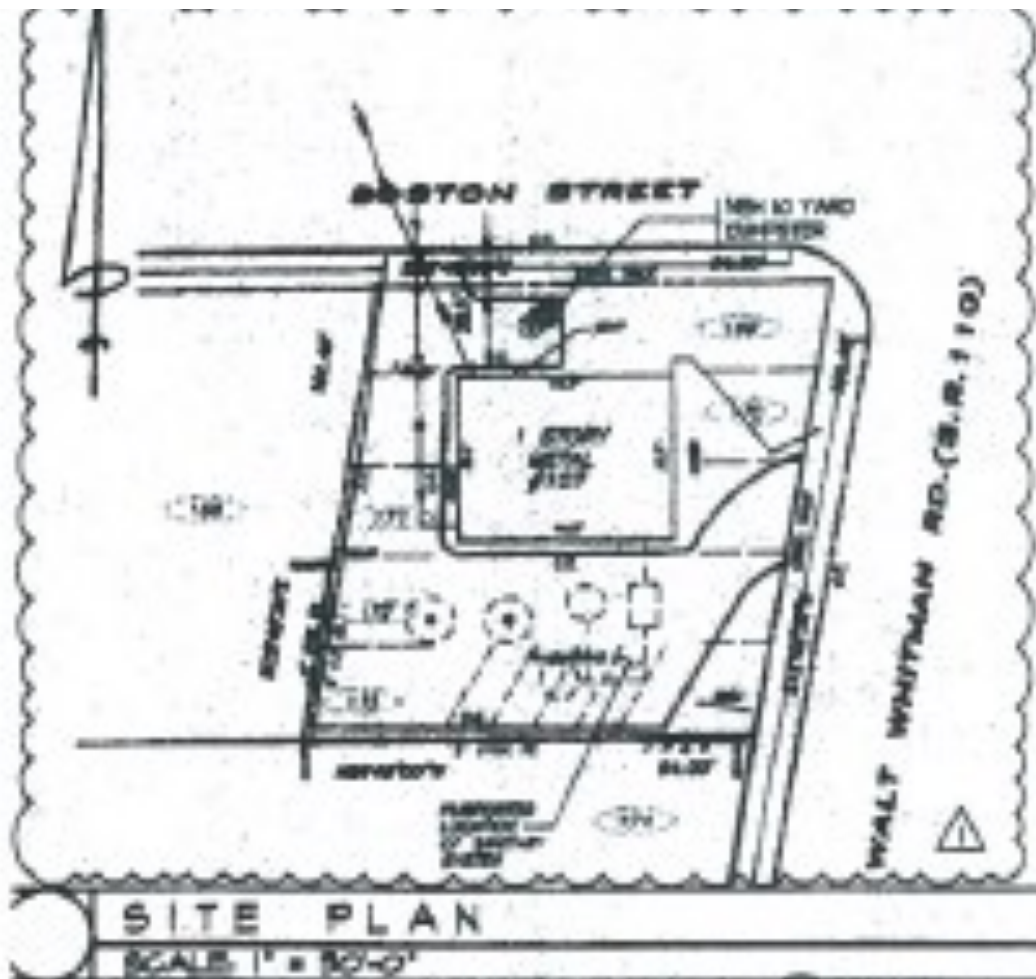
27 East Jericho Turnpike– Suite 2, Mineola, New York 11501

516-248-6905 516-741-4587 (Fax)

888 Veterans Memorial Highway– Suite 530, Hauppauge 11788

631-761-9220 631-761-9221 (Fax)

SURVEY



Contact:

Ed Madden 516-521-5731 (cell)



S & D Real Estate

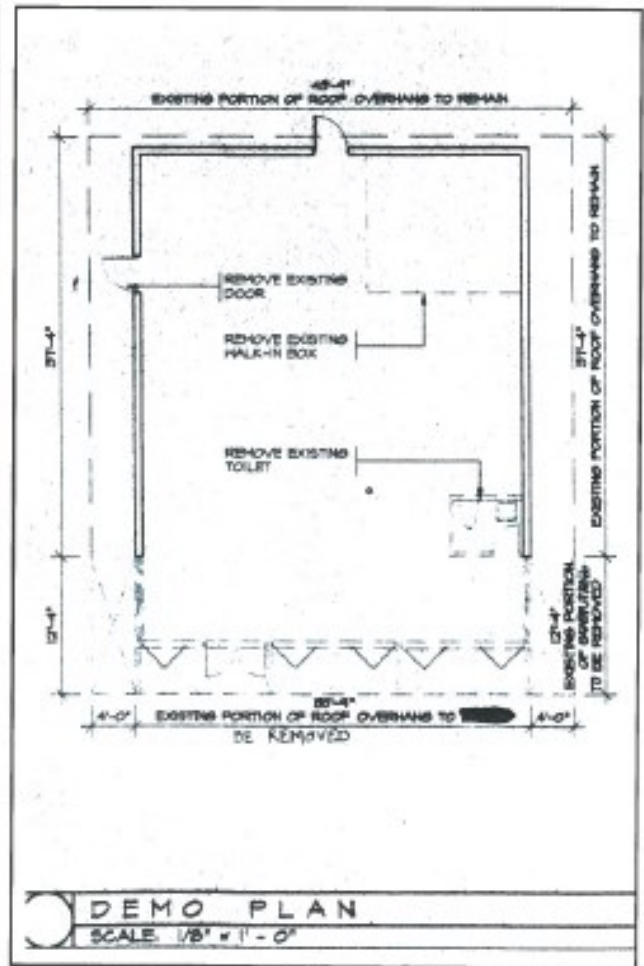
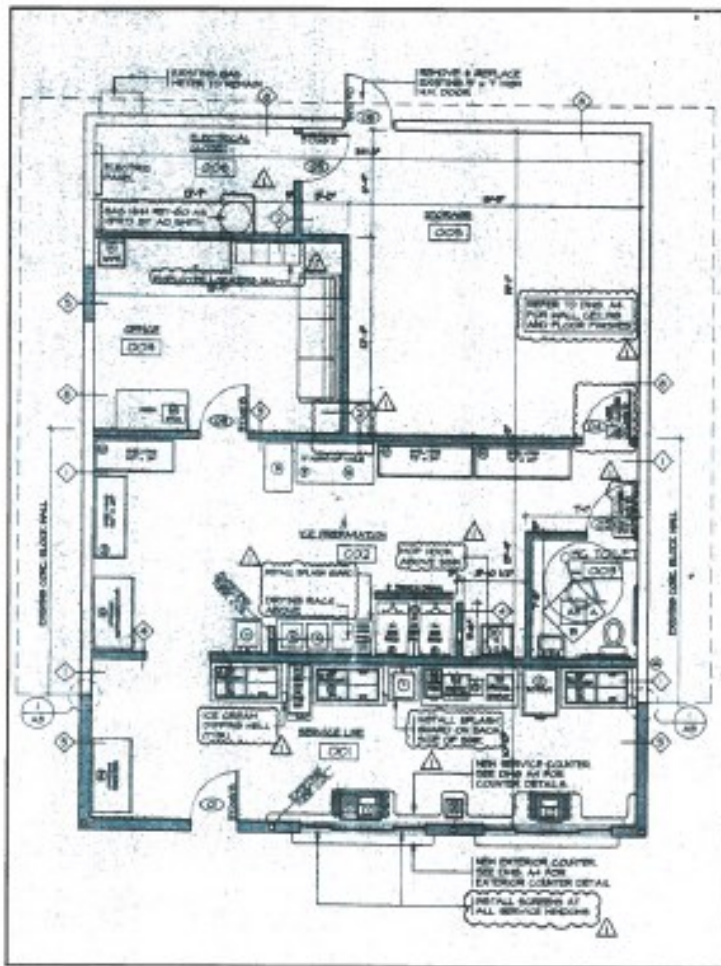
27 East Jericho Turnpike– Suite 2, Mineola, New York 11501

516-248-6905 516-741-4587 (Fax)

888 Veterans Memorial Highway– Suite 530, Hauppauge 11788

631-761-9220 631-761-9221 (Fax)

PLANS



Contact:

Ed Madden 516-521-5731 (cell)