



S & D Real Estate

27 East Jericho Turnpike– Suite 2, Mineola, New York 11501

516-248-6905 516-741-4587 (Fax)

888 Veterans Memorial Highway– Suite 530, Hauppauge 11788

631-761-9220 631-761-9221 (Fax)

FOR SALE

SCHOOL STREET PROFESSIONAL BUILDING

PROFESSIONAL OFFICE / MEDICAL SPACE

50 SCHOOL STREET GLEN COVE, NY 11542



ASKING PRICE
\$1,600,000

4,000 +/- SF

ALLOWED TO
EXPAND 2,000 SF

RE TAXES \$24,219

FOUR DEDICATED
PARKING SPOTS

AMPLE MUNICIPAL
PARKING IN REAR

2,000 +/- SQ. FT.
BASEMENT

HANDICAPPED
ACCESSIBLE

HISTORIC CLASS B PROFESSIONAL OFFICE / MEDICAL BUILDING
WALKING DISTANCE TO NEW 146 LUXURY UNITS (VILLAGE SQUARE)
MINUTES FROM GARVIES POINT 56 ACRE WATERFRONT DEVELOPMENT
MINUTES TO LIRR

CALL :

MARTIN SCHACKNER 516.248.6905 OR CELL 516.455.1110

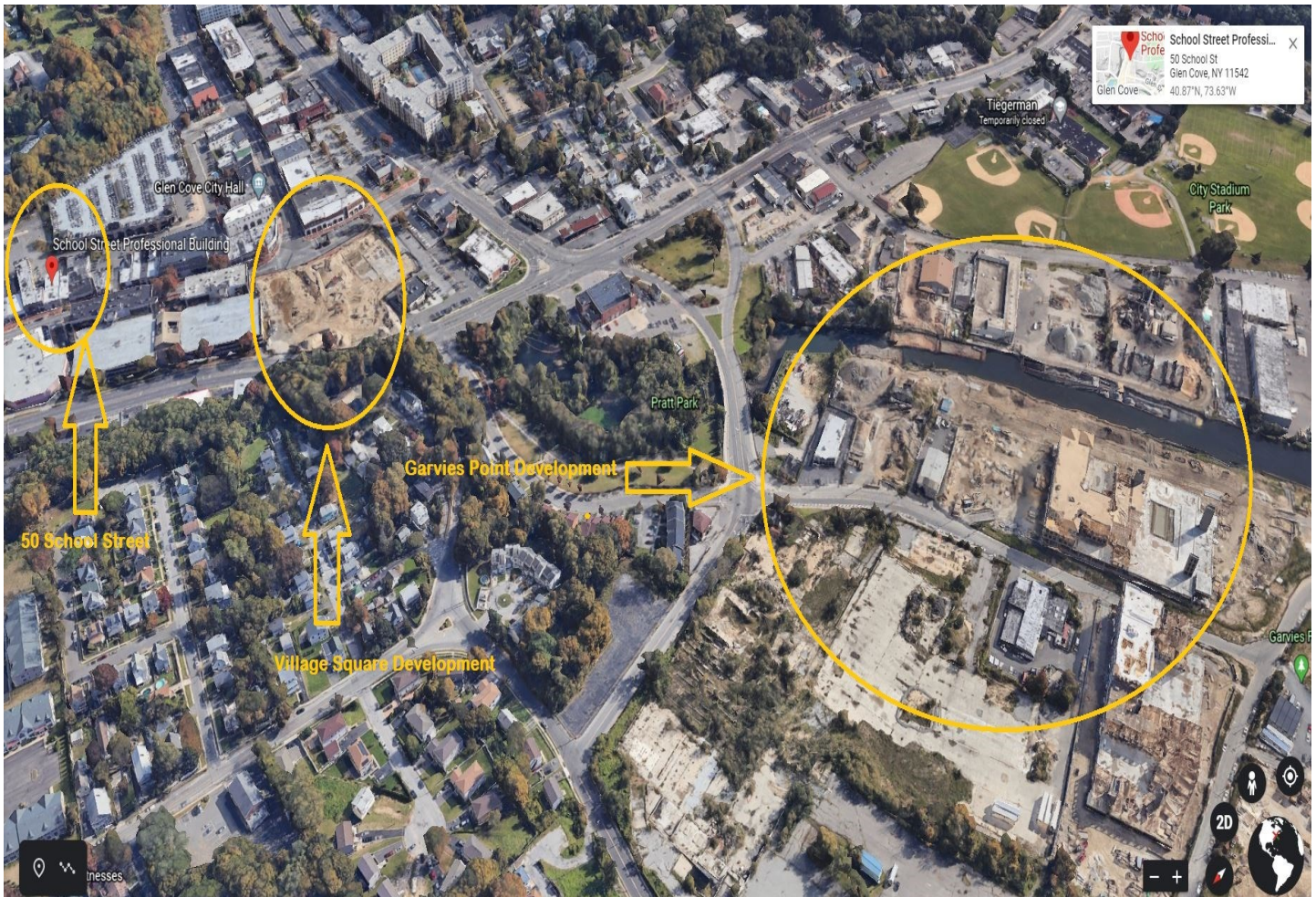
GINA COLETTI 516.248.6905 OR CELL 631.926.5385

The information herein does not constitute an offer, representation, or warranty, and S&D Real Estate cannot guarantee the completeness or accuracy of any information contained herein. Prospective purchasers should independently verify all information pertaining to the subject property; and may do so through, among other sources, available public records from the applicable municipality.



S & D Real Estate
27 East Jericho Turnpike– Suite 2, Mineola, New York 11501
516-248-6905 516-741-4587 (Fax)
888 Veterans Memorial Highway– Suite 530, Hauppauge 11788
631-761-9220 631-761-9221 (Fax)

AERIAL VIEW



Contact:
MARTIN SCHACKNER 516.248.6905 OR CELL 516.455.1110
GINA COLETTI 516.248.6905 OR CELL 631.926.5385

The information herein does not constitute an offer, representation, or warranty, and S&D Real Estate cannot guarantee the completeness or accuracy of any information contained herein. Prospective purchasers should independently verify all information pertaining to the subject property; and may do so through, among other sources, available public records from the applicable municipality.



S & D Real Estate

27 East Jericho Turnpike– Suite 2, Mineola, New York 11501

516-248-6905 516-741-4587 (Fax)

888 Veterans Memorial Highway– Suite 530, Hauppauge 11788

631-761-9220 631-761-9221 (Fax)

GARVIES POINT DEVELOPMENT

Garvies Point: City Life, Suburban Surroundings: Glen Cove is getting a much needed billion-dollar makeover

by MILLENNIUMMAGAZINE

By Edwin J. Viera



Nestled along Long Island's Gold Coast, the small city of **Glen Cove** is undergoing a massive development. For the last twenty years, the city has partnered with RXR Realty to redevelop 56 acres of the town known as **Garvies Point**. For years, this area was blighted, and was for a time a superfund cleanup site.

Now the project has leapt off the page and is in full swing. The new Garvies Point will contain several new apartment buildings with retail spaces on the ground floors, marinas, as well as a new ferry which will run from Garvies Point to East 34 Street in Midtown Manhattan with an additional stop at Wall Street in Downtown Manhattan.

Contact:

MARTIN SCHACKNER 516.248.6905 OR CELL 516.455.1110
GINA COLETTI 516.248.6905 OR CELL 631.926.5385

The information herein does not constitute an offer, representation, or warranty, and S&D Real Estate cannot guarantee the completeness or accuracy of any information contained herein. Prospective purchasers should independently verify all information pertaining to the subject property; and may do so through, among other sources, available public records from the applicable municipality.



S & D Real Estate

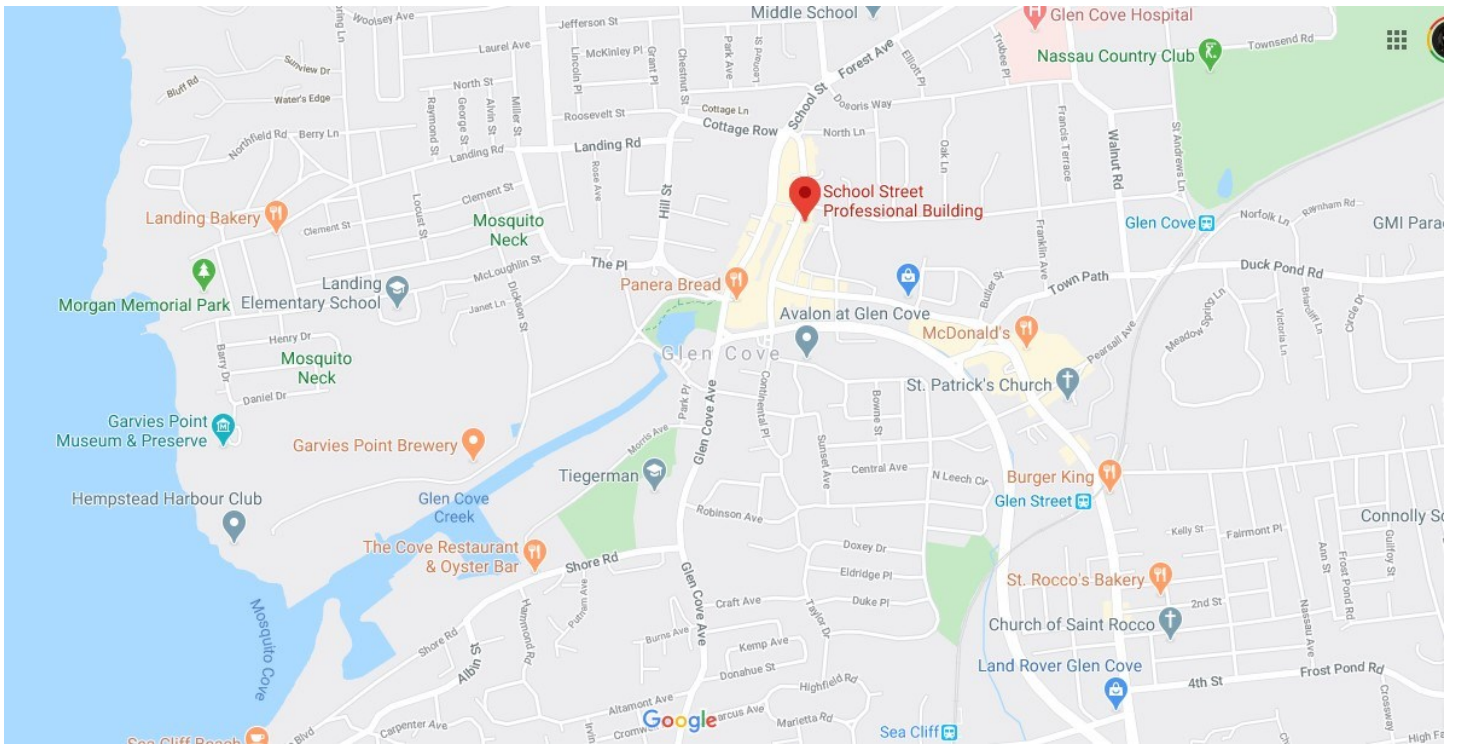
27 East Jericho Turnpike– Suite 2, Mineola, New York 11501

516-248-6905 516-741-4587 (Fax)

888 Veterans Memorial Highway– Suite 530, Hauppauge 11788

631-761-9220 631-761-9221 (Fax)

MAP



Contact:

MARTIN SCHACKNER 516.248.6905 OR CELL 516.455.1110

GINA COLETTI 516.248.6905 OR CELL 631.926.5385

The information herein does not constitute an offer, representation, or warranty, and S&D Real Estate cannot guarantee the completeness or accuracy of any information contained herein. Prospective purchasers should independently verify all information pertaining to the subject property; and may do so through, among other sources, available public records from the applicable municipality.



S & D Real Estate

27 East Jericho Turnpike– Suite 2, Mineola, New York 11501

516-248-6905 516-741-4587 (Fax)

888 Veterans Memorial Highway– Suite 530, Hauppauge 11788

631-761-9220 631-761-9221 (Fax)

INTERIOR SPACES



Contact:

MARTIN SCHACKNER 516.248.6905 OR CELL 516.455.1110

GINA COLETTI 516.248.6905 OR CELL 631.926.5385

The information herein does not constitute an offer, representation, or warranty, and S&D Real Estate cannot guarantee the completeness or accuracy of any information contained herein. Prospective purchasers should independently verify all information pertaining to the subject property; and may do so through, among other sources, available public records from the applicable municipality.